

UNICA  
TARIMA TECNOLÓGICA

# PRODUCT INSTALLATION GUIDE

WPC BATTEN TUBE



ATTENTION

Prior to installing any WPC products, it is recommended that you check with local building codes for any special requirements or restrictions. The installation guide is for illustration purposes only and is not implied to replace a licensed professional. Any construction or use of UNICA® products must be in accordance with all local zoning and building codes. The consumer assumes all risks and liability associated with the construction and use of this product.



## READ THE INSTALLATION GUIDE ALL SECTIONS CAREFULLY BEFORE YOU START

### SAFETY WARNING

When dealing with any type of construction project, it is necessary to wear appropriate safety equipment to avoid any risk of injuries. UNICA® recommends, but is not limited to the following safety equipment, when handling, cutting and installing UNICA® products: gloves, a respiratory protection, long sleeves, pants, and safety glasses.

### TOOLS

Standard woodworking tools can be used. It is recommended that all blades have a carbide tip. Stainless steel or acceptable coated screws and nails are recommended.

### ENVIRONMENT

A clean, smooth, flat, and strong surface is needed to install UNICA products correctly. Please check with local building codes before ever installing any type of products. The products shall be stored on a smooth and tidy floor.

### PLANNING

Reasonable design and installation planning can ensure quick and smooth installation of UNICA® products. Plan a layout before starting installation to ensure the best possible looking for your project. We recommend drawing out a site plan of your proposed project that you intend to do to minimize errors.

### CONSTRUCTION

UNICA® products is NOT intended for use as columns, support posts, beams, joist stringers, support against a force, or other primary load-bearing members. It must be supported by a code-compliant substructure.

### STATIC

Static can also be more prevalent in areas that are of higher altitude because the humidity is lower. For these areas, be careful when using UNICA® products with conductive objects such as metal railing and chairs as static shocks might occur more often.

### VENTILATION

UNICA® products CANNOT be directly installed onto a flat surface. It must be installed onto a substructure, so there is adequate and unobstructed air flow under the products to prevent excessive water absorption. A minimum of 1" (25mm) of continuous net free area between the products and wall is required for adequate ventilation.

### HEAT AND FIRE

Excessive heat from external sources such as but not limited to fire will cause damage to UNICA® products. Therefore, do not install UNICA® products near heat sources such as fireplaces. Low-emissivity glass is designed to prevent passive heat gain within a structure and can cause unusual heat build-up on exterior surfaces, it will lead to heat reflection resulting in the formation of heat source in the surrounding environment. It is recommended that you consult the glass manufacturer in advance for advice on reducing heat reflection.

### FASTENERS

When fastening UNICA® products, it is recommended to predrill the holes on the profile, the screws that are face fastened should always be driven in at a 90 degree angle to the products' surface.

Use white chalk, straight boards, or string lines as templates for straight lines. NEVER USE COLORED CHALK. Colored chalk will permanently stain UNICA® products and are highly not recommended.

Use the screw as shown in the Accessories List. Please use a short section of UNICA® product to test the screw effect in advance. The inappropriate screw will appear protruding at the hole.

When choosing which screws/nails to use, always check first with your local home centers and hardware stores to see if they have screws that are engineered specifically for composite wood.

If you are unsure which screw/nail to use, contact your manufacturer for more.

### ACCESSORIES LIST

#### 1 Expansion bolt



#### 2 U shape fastener



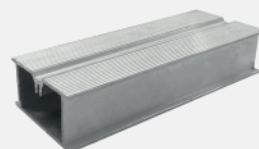
#### 3 Core screw



#### 4 Galvanized square pipe



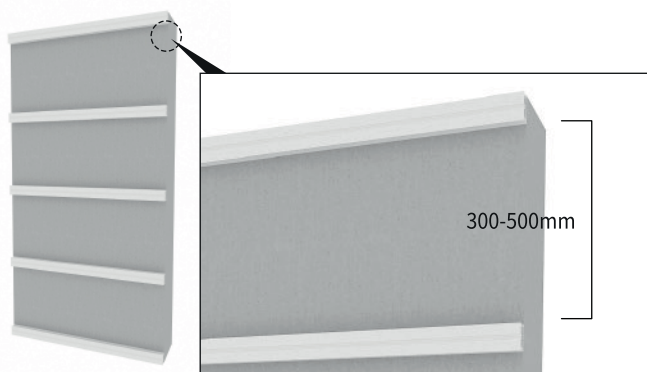
#### 5 Joist



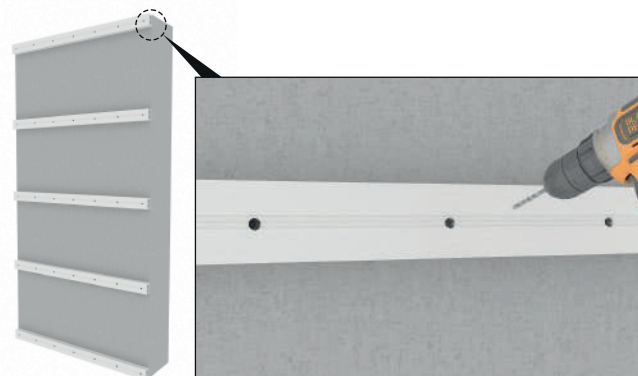
## A. INSTALLATION WITH JOIST

### BEL50100 as an example

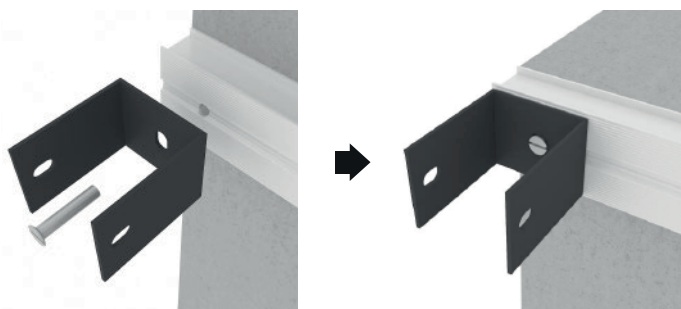
- 1** Install metal joist (Galvanized square pipe or aluminium joist) to concrete wall, best distance between every two metal joist is 300mm-500mm.



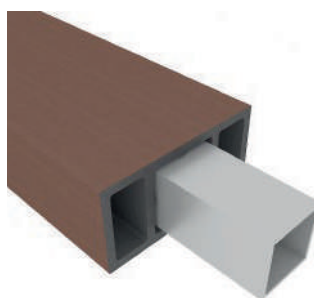
- 2** Pre-drill metal joist horizontally according to needed distance.



- 3** Through pre-drilled metal joist hole, use expansion screw to fix U shape fastener to the metal joist and concrete wall.



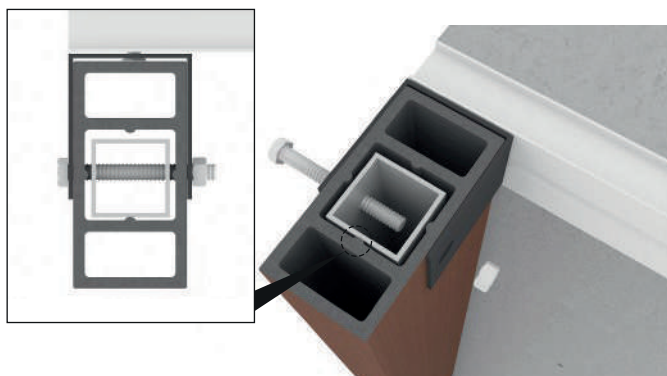
- 4** Insert galvanized square pipe into WPC batten tube, galvanized square pipe should be same length as WPC batten tube.



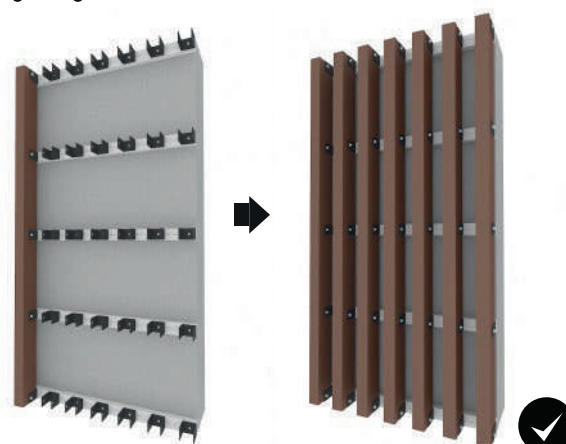
- 5** Pre-drill galvanized square pipe and WPC batten tube at the same time, distance of pre-drill hole should be same distance as metal joist.



- 6** Put batten tube into the U shape fastener, and then use core screw to fix batten tube to the U shape fastener.



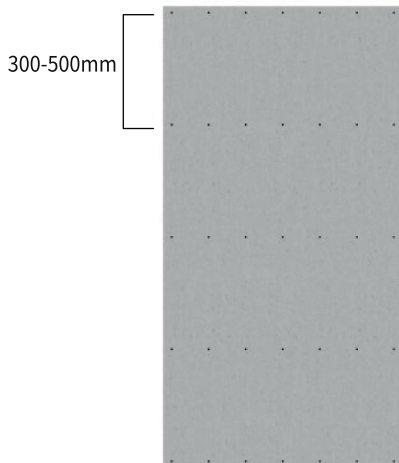
- 7** Tightening core screw till batten tube not looseness.



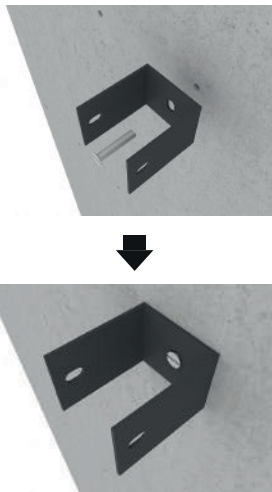
## B. INSTALL TO CONCRETE WALL DIRECTLY

### BEL50100 as an example

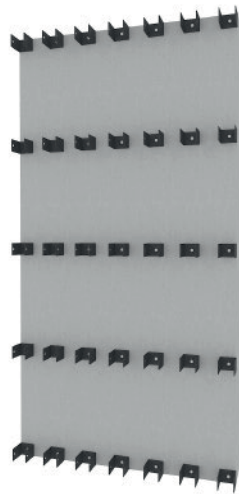
- 1** Pre-drill hole to concrete wall, vertical best distance between every two hole is 300mm-500mm. Horizontal distance between two hole will be pre-drilled according to needed distance.



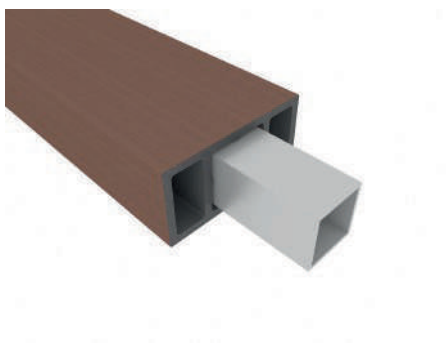
- 2** According to pre-drilled hole, use expansion screw to fix U shape fastener to the concrete wall.



- 3** Reference picture



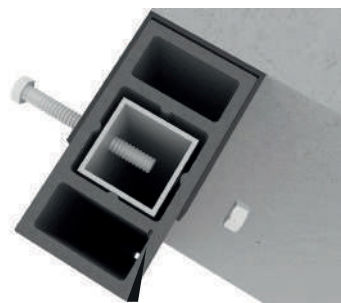
- 4** Insert galvanized square pipe into WPC batten tube, galvanized square pipe should be same length as WPC batten tube.



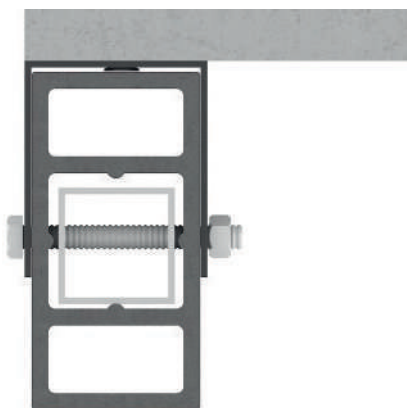
- 5** Pre-drill galvanized square pipe and WPC batten tube at the same time, distance of pre-drill hole should be same distance as pre-drilled hole on wall.



- 6** Put batten tube into the U shape fastener, and then use core screw to fix batten tube to the U shape fastener.



- 7** Tightening core screw till batten tube not looseness.



- 8** The rest can be done in the same manner to fix WPC batten tube.



- 9** Finished installation effect.

